

USB Driver Installation guide for C51

Contents

Introduction	2
Preparations.....	2
Installation Guide for automatic driver installation Windows 7.....	4
Installation Guide for manually driver installation for Windows 7.....	7

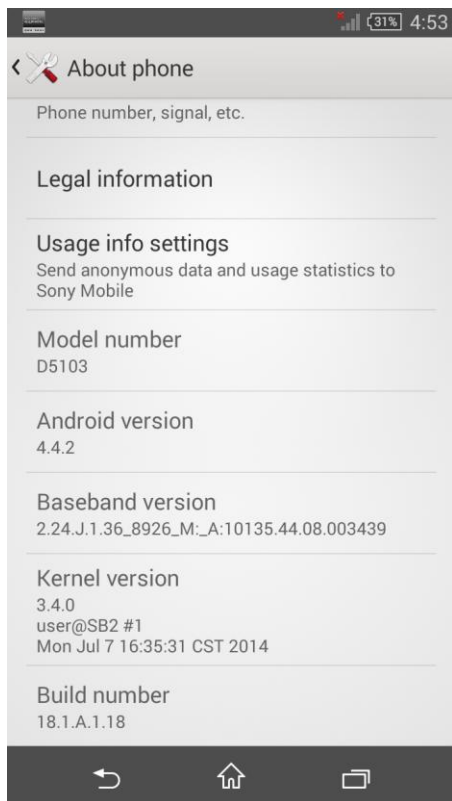
Revision	Description	Date
1	First release	14.07.22

Introduction

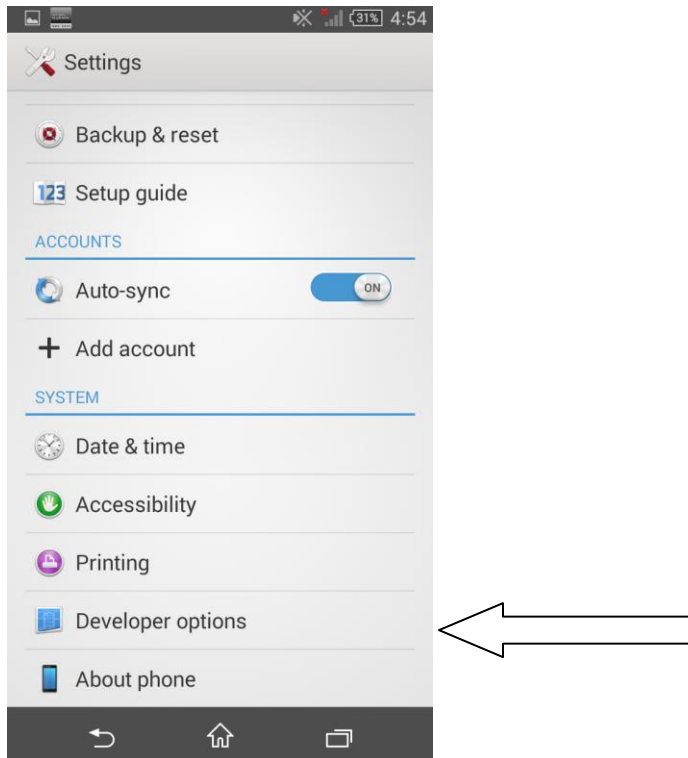
This Guide contains two sections the preparations which are done to the phone, and the Installation Guide for Windows 7 which is done on the computer.

Preparations

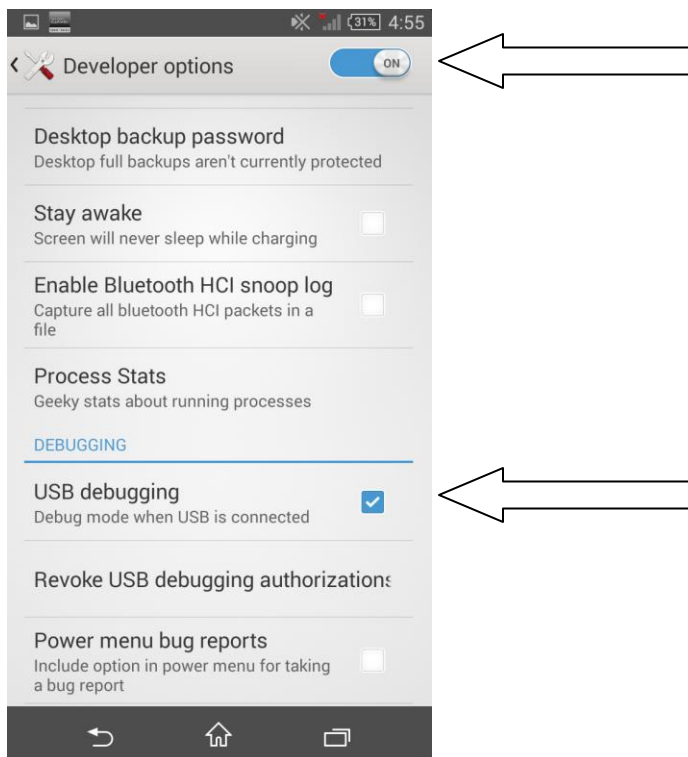
1. Turn on the phone.
2. Enter “Settings -> About phone”, hit “Build number” 7 times.



3. "Developer options" menu item will be showed in "Settings" page.



3 . Enable "USB" debugging



Installation Guide for automatic driver installation

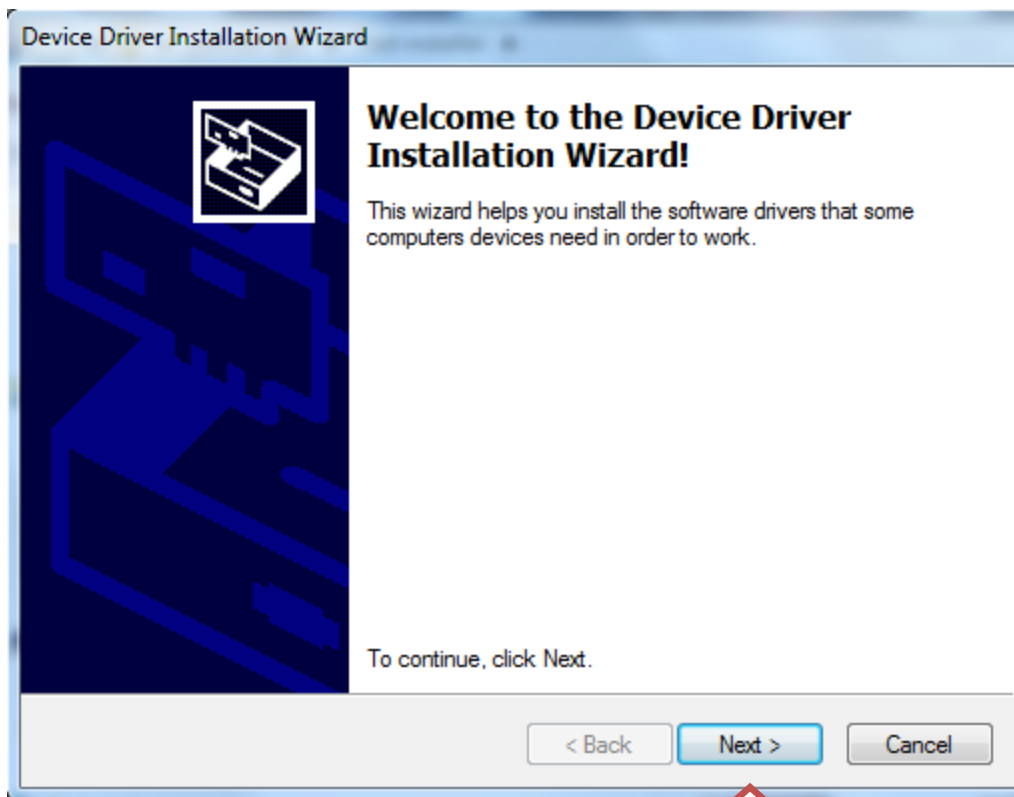
Windows 7

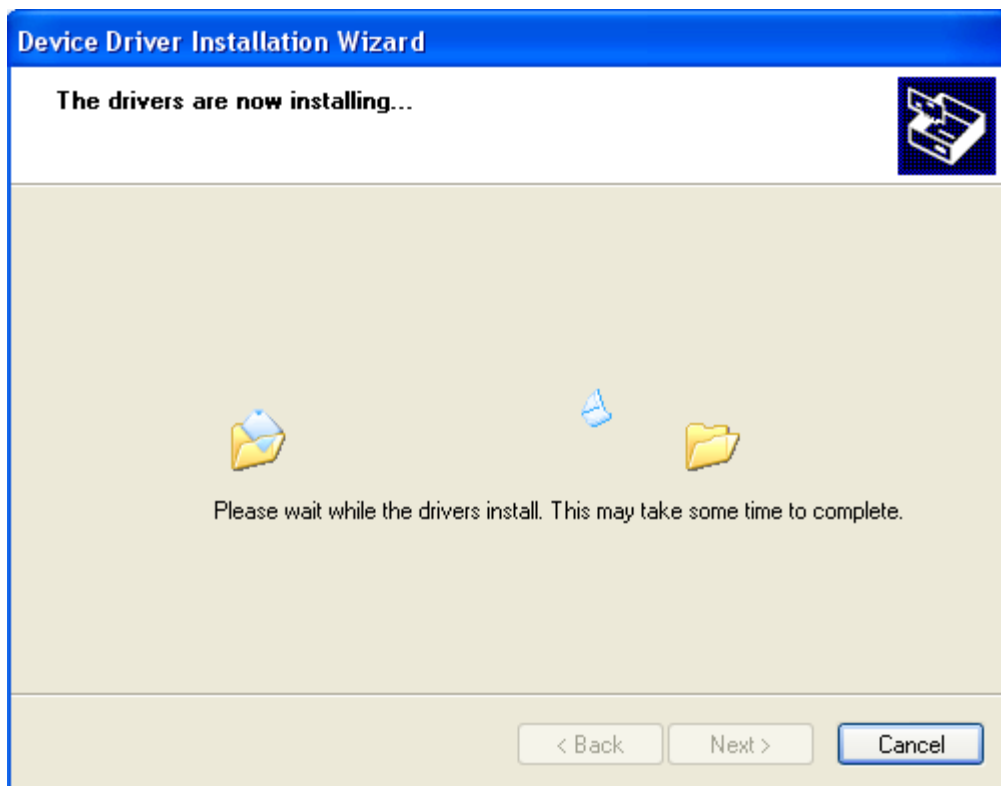
This guide explains how to install the Sony so0108 ADB Interface Drivers.

From the installation package run the Install adb drivers.

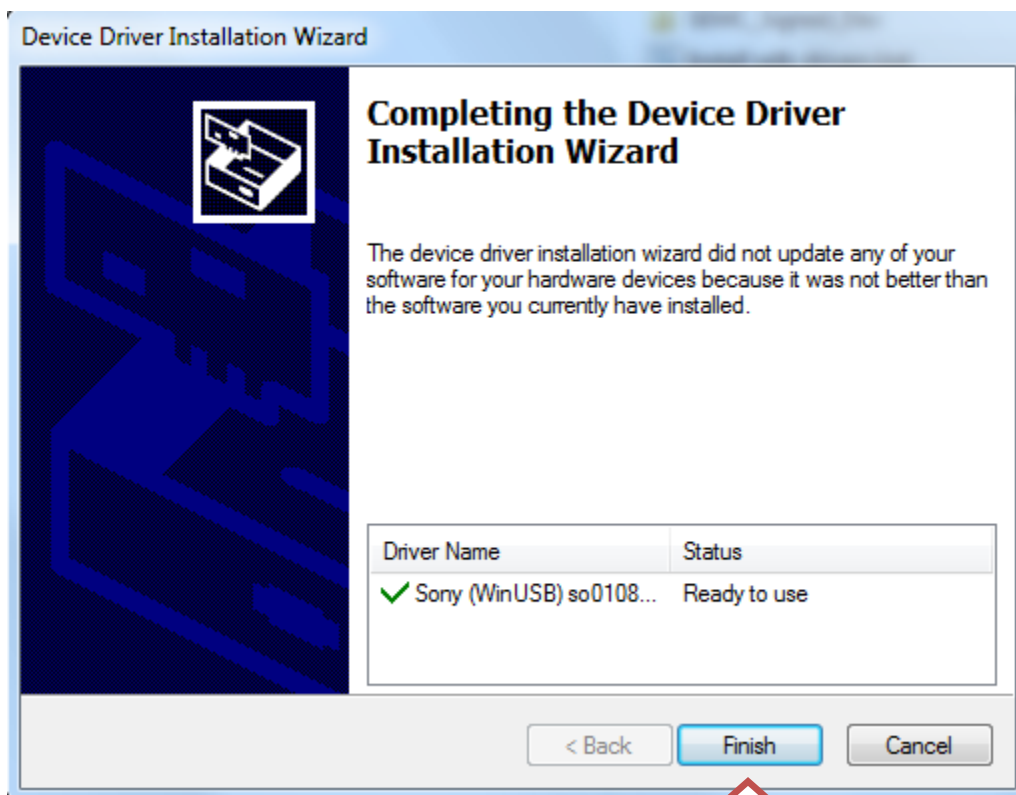


The installation process will then start. Click Next.





Click Finish.



After the driver installation, the system should find the drivers automatically, if not follow manual Installation Guide below.

Installation Guide for manually driver installation for Windows 7

This guide explains how to manually install the Sony so0108 ADB Interface Driver on a Windows 7 system.

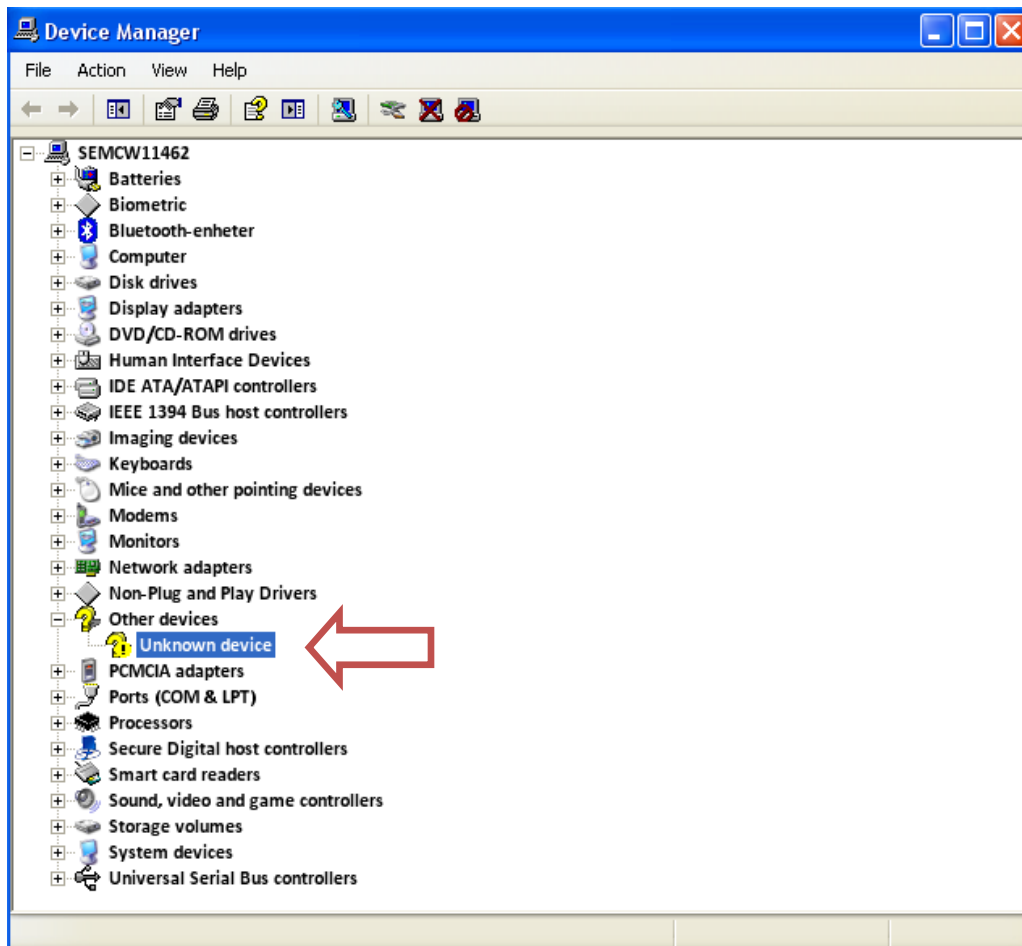
After the preparation step do the following.

If add new hardware pops up, when the phone is connected, follow the guide from Page 10.

If no add new hardware pops up, when the phone is connected, start device manager following the path below. And follow guide from next page.

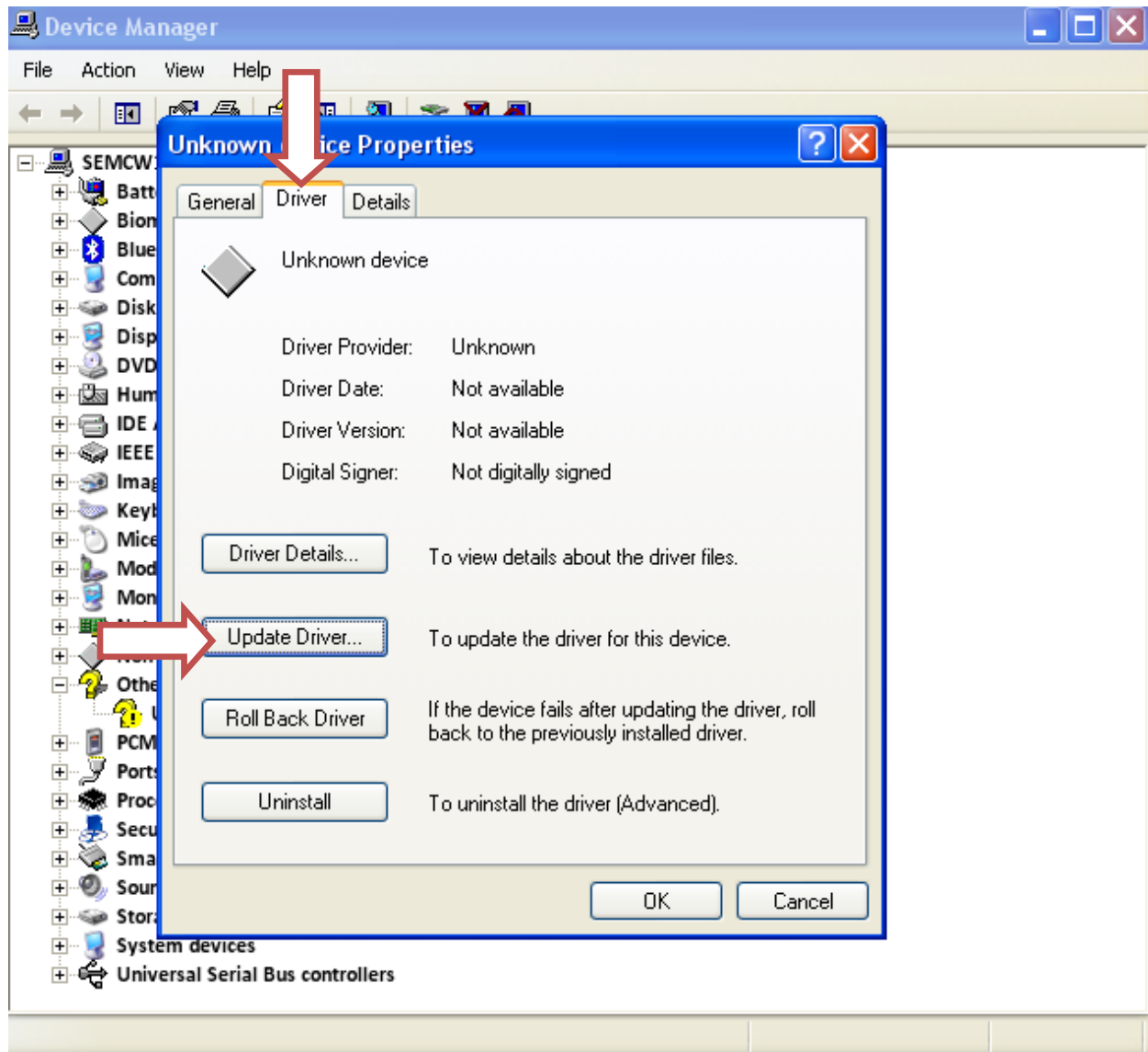
Open Device Manager from Start->Setting->Control Panel->System->Hardware->Device Manager.

Open Unknown device. That appears when the phone is connected.

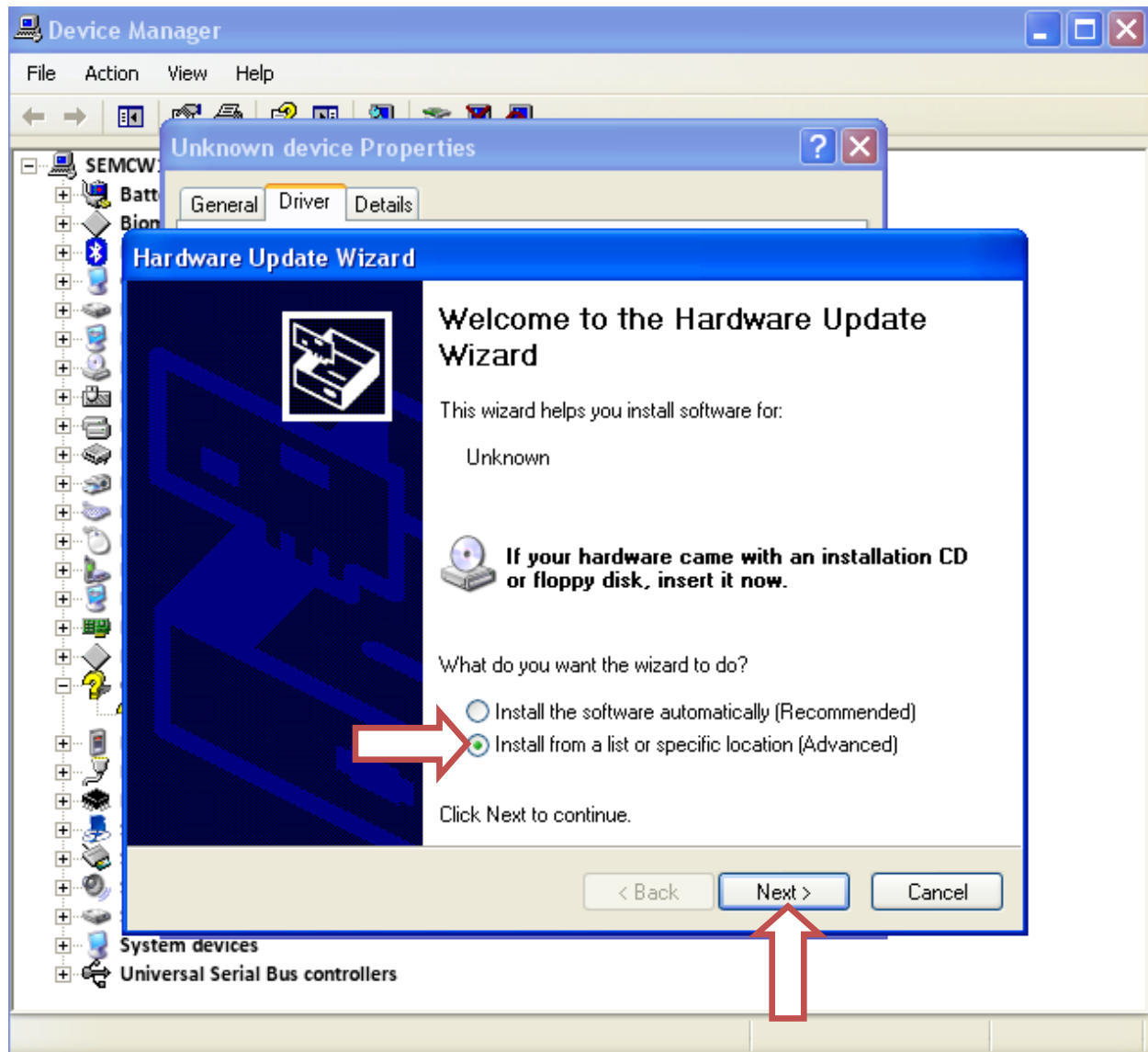


Click the Driver tab.

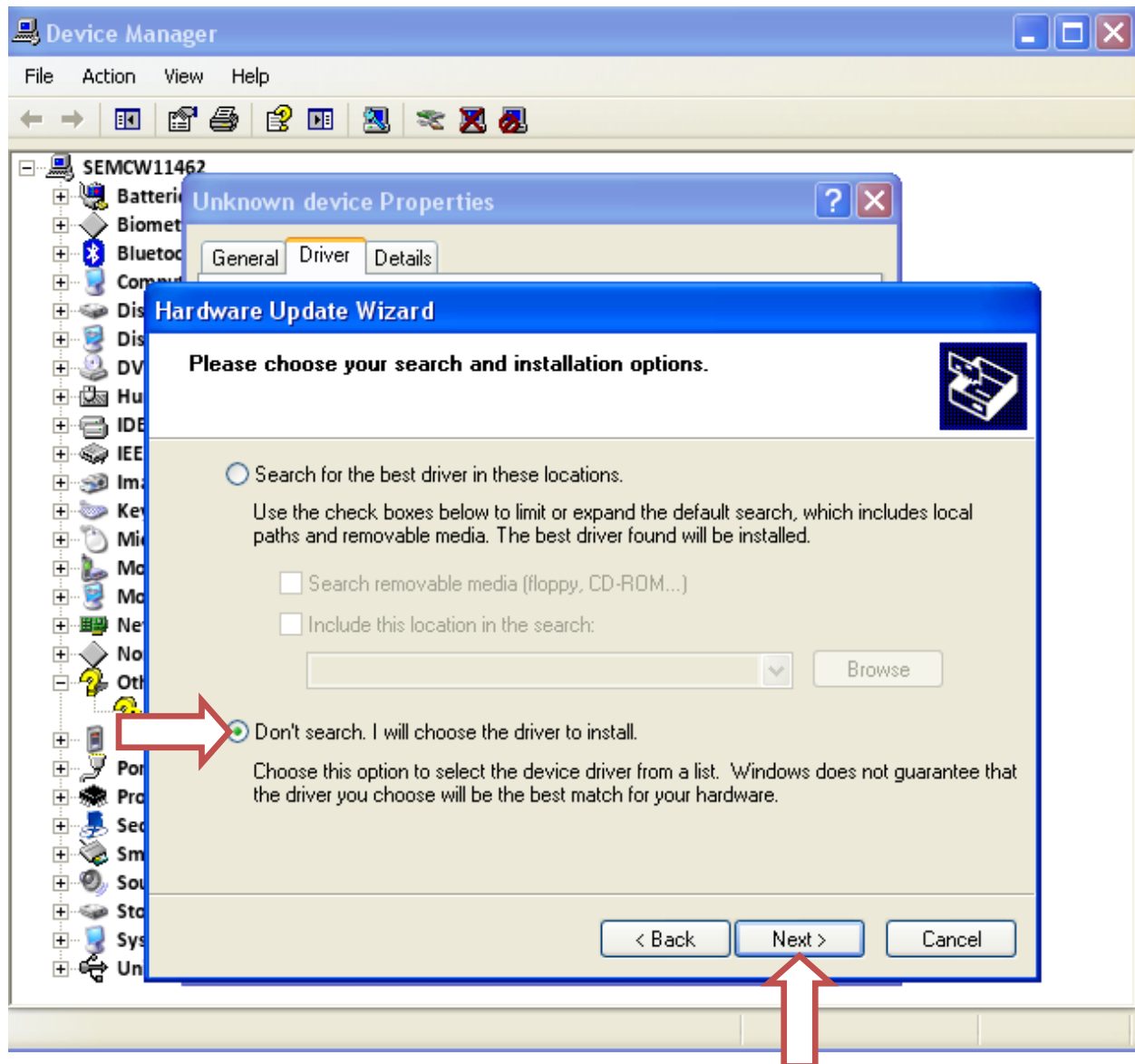
Click Update Driver.



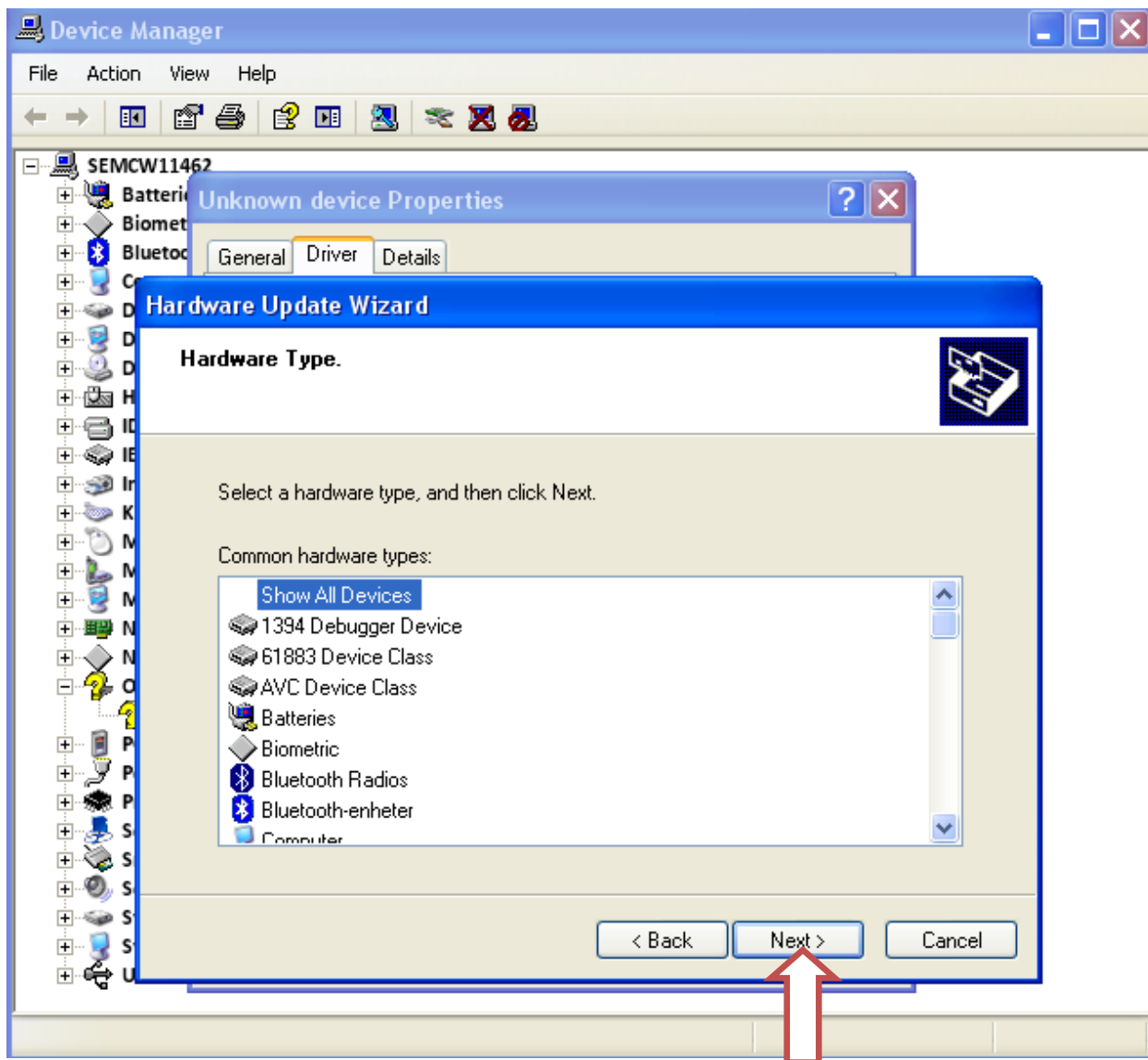
Check Install from a list or specific location (Advanced).
Click Next.



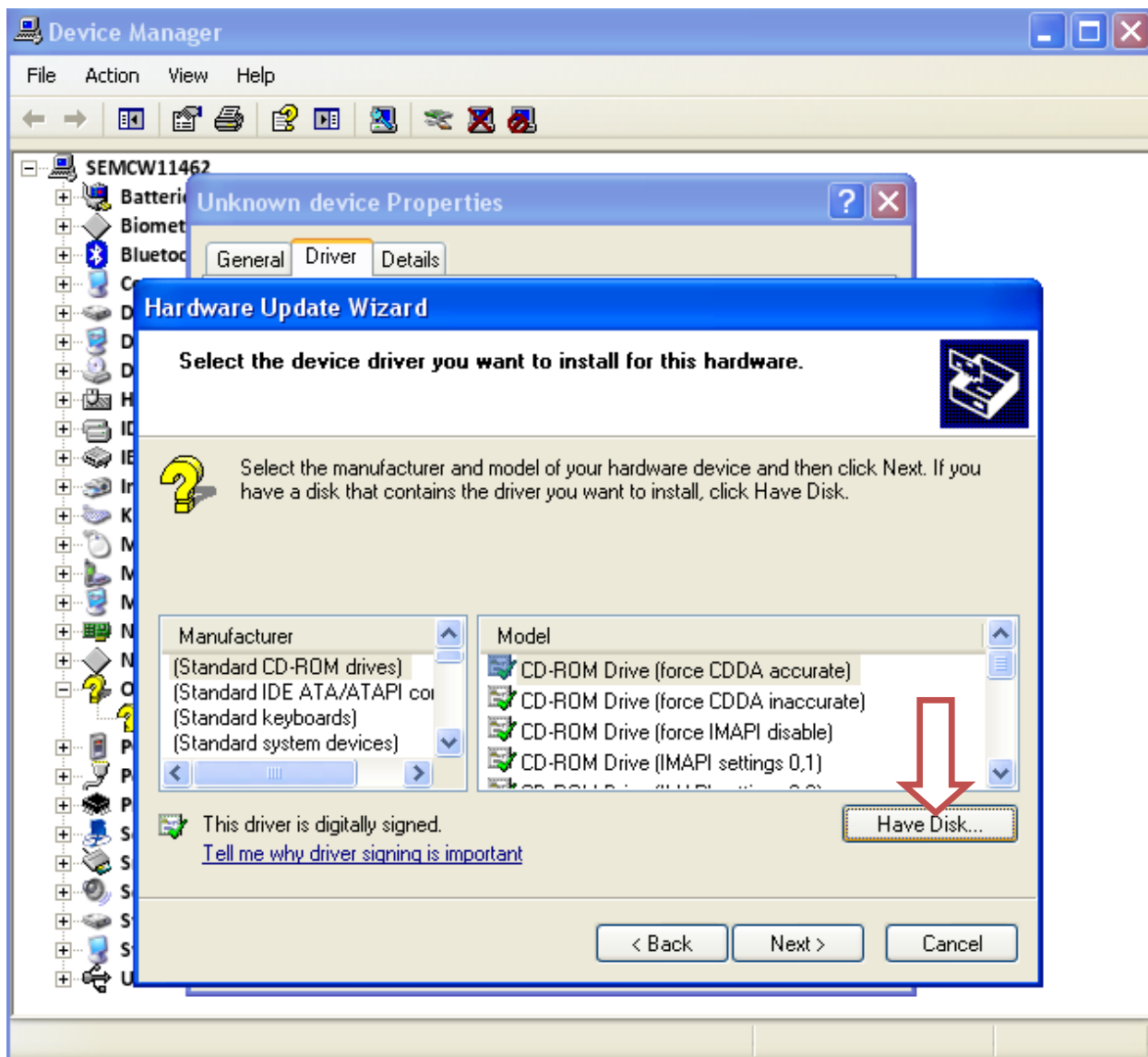
Check don't search. I will choose the driver to install.
Click Next.



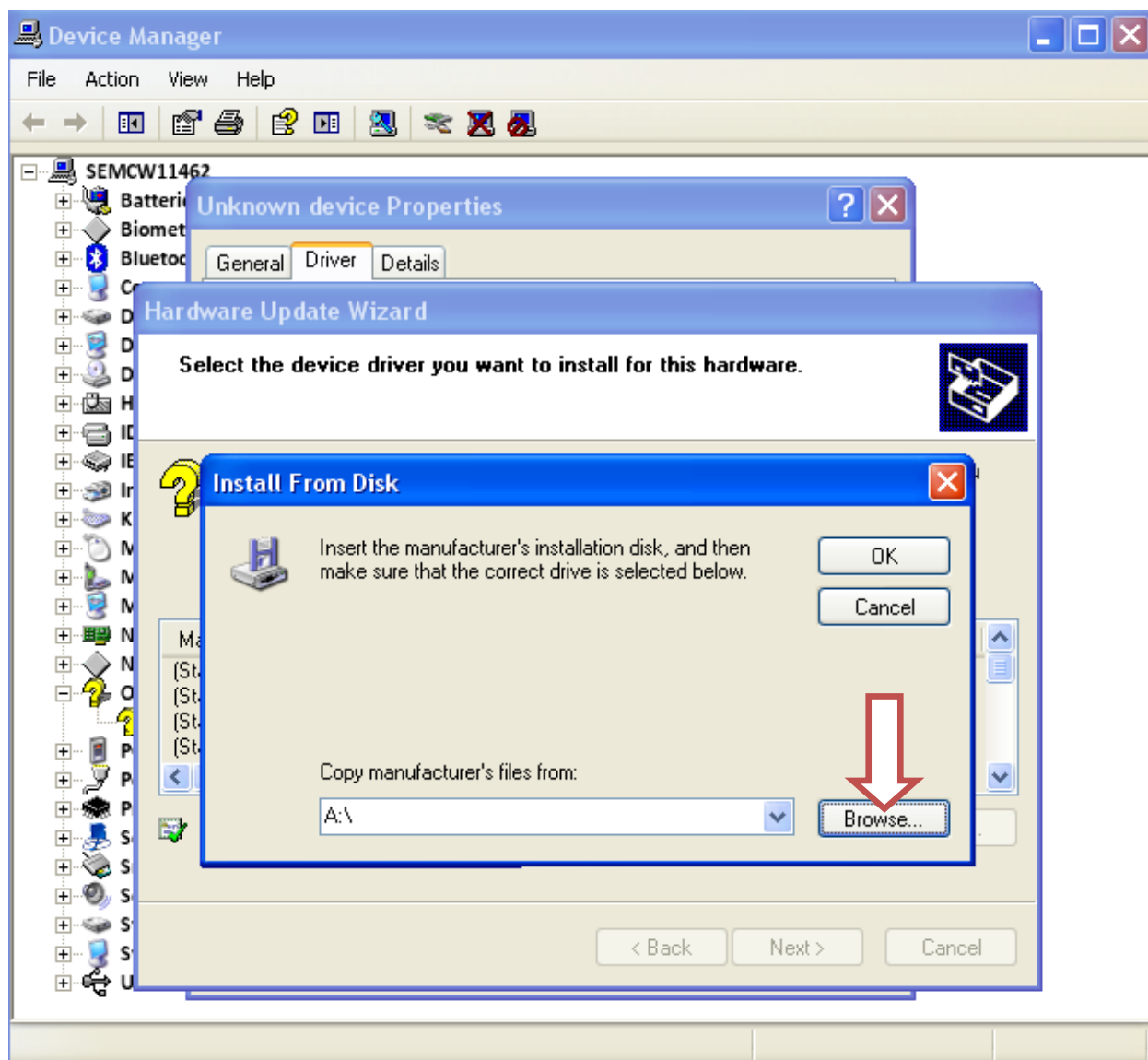
Click Next.



Click Have Disk.



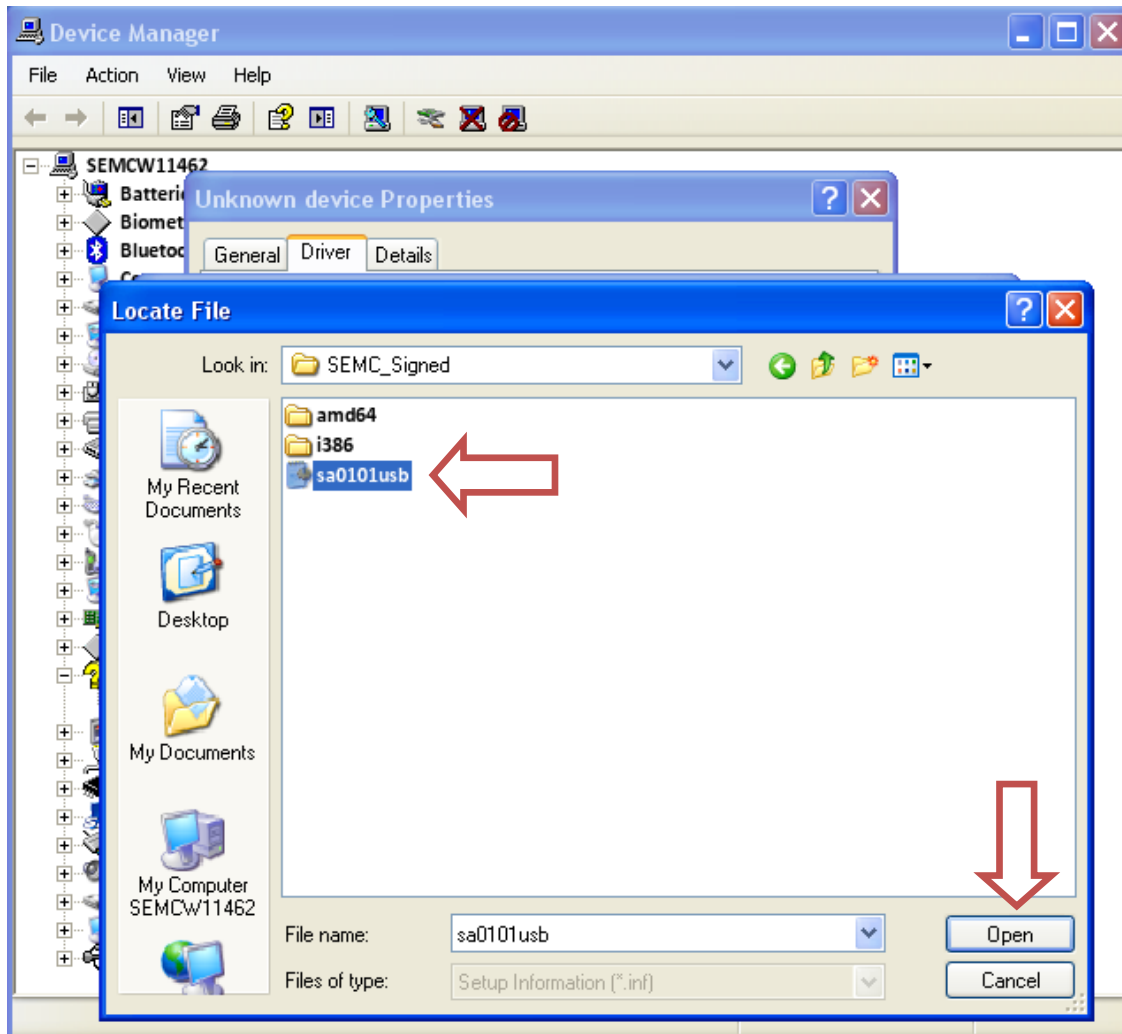
Click Browse.



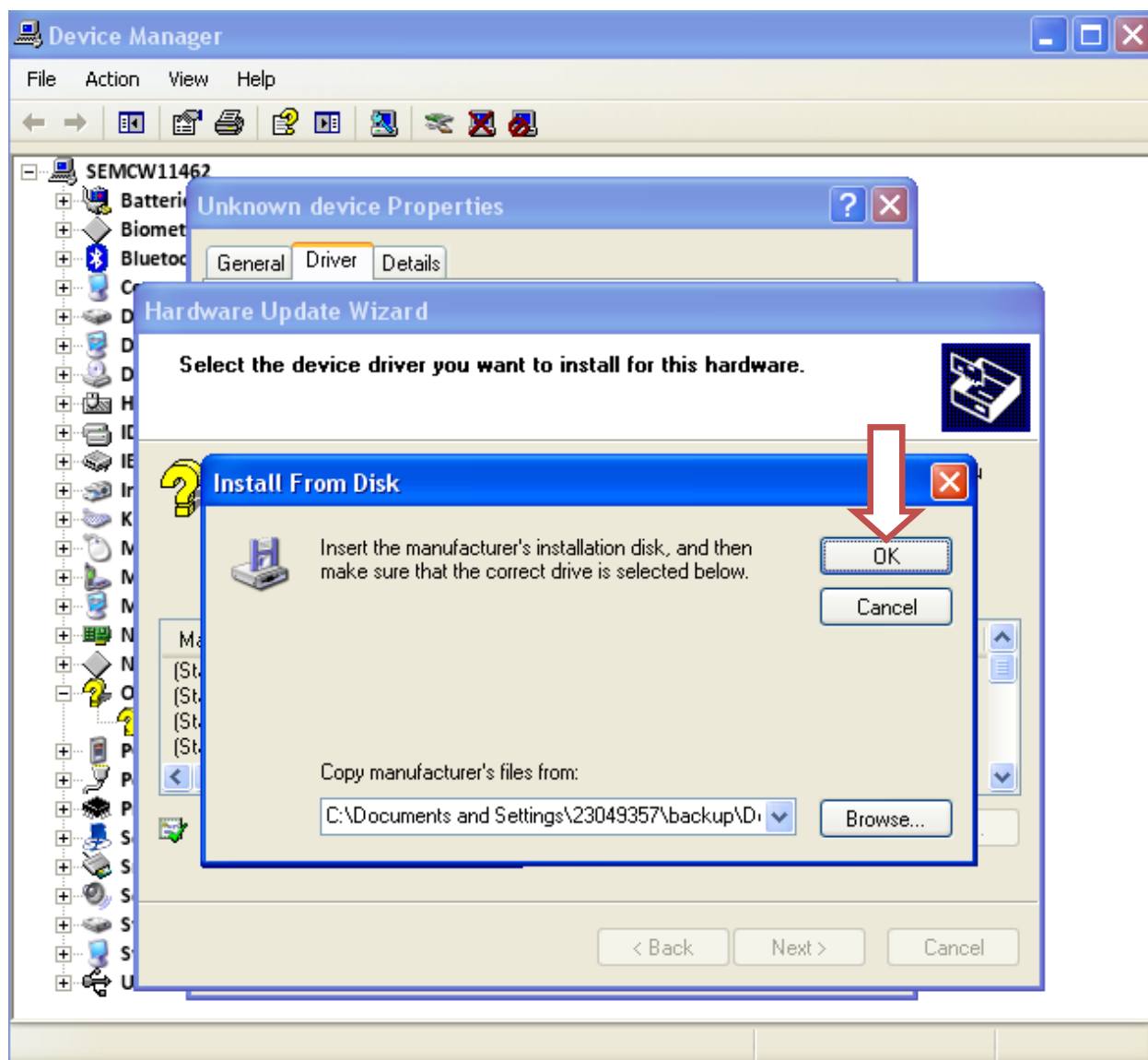
Browse to the folder where you have downloaded the driver.
Select the so0108usb driver. In the SEMC_Signed folder.

Use so0108usb driver for C51xx.

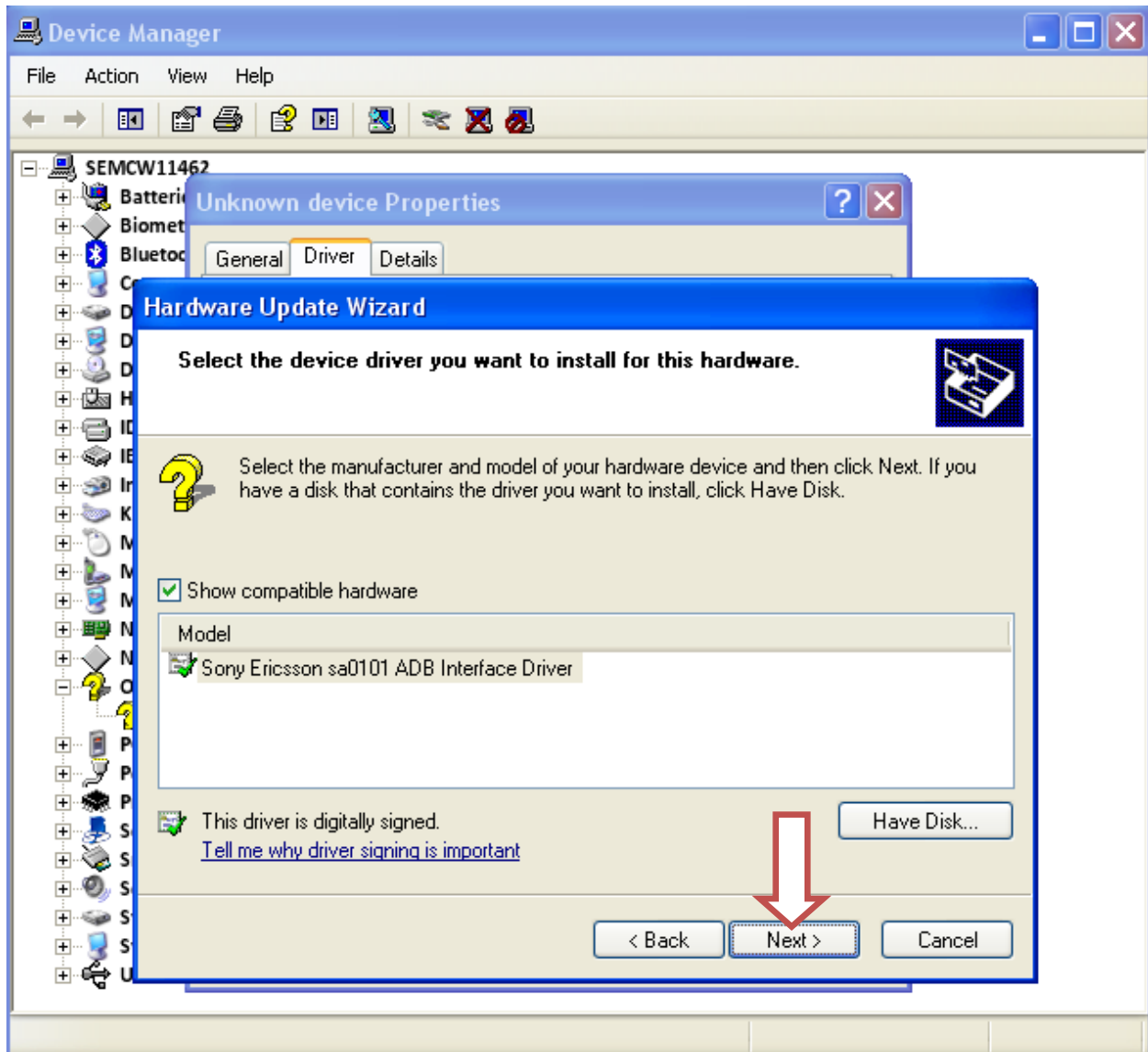
Click Open.



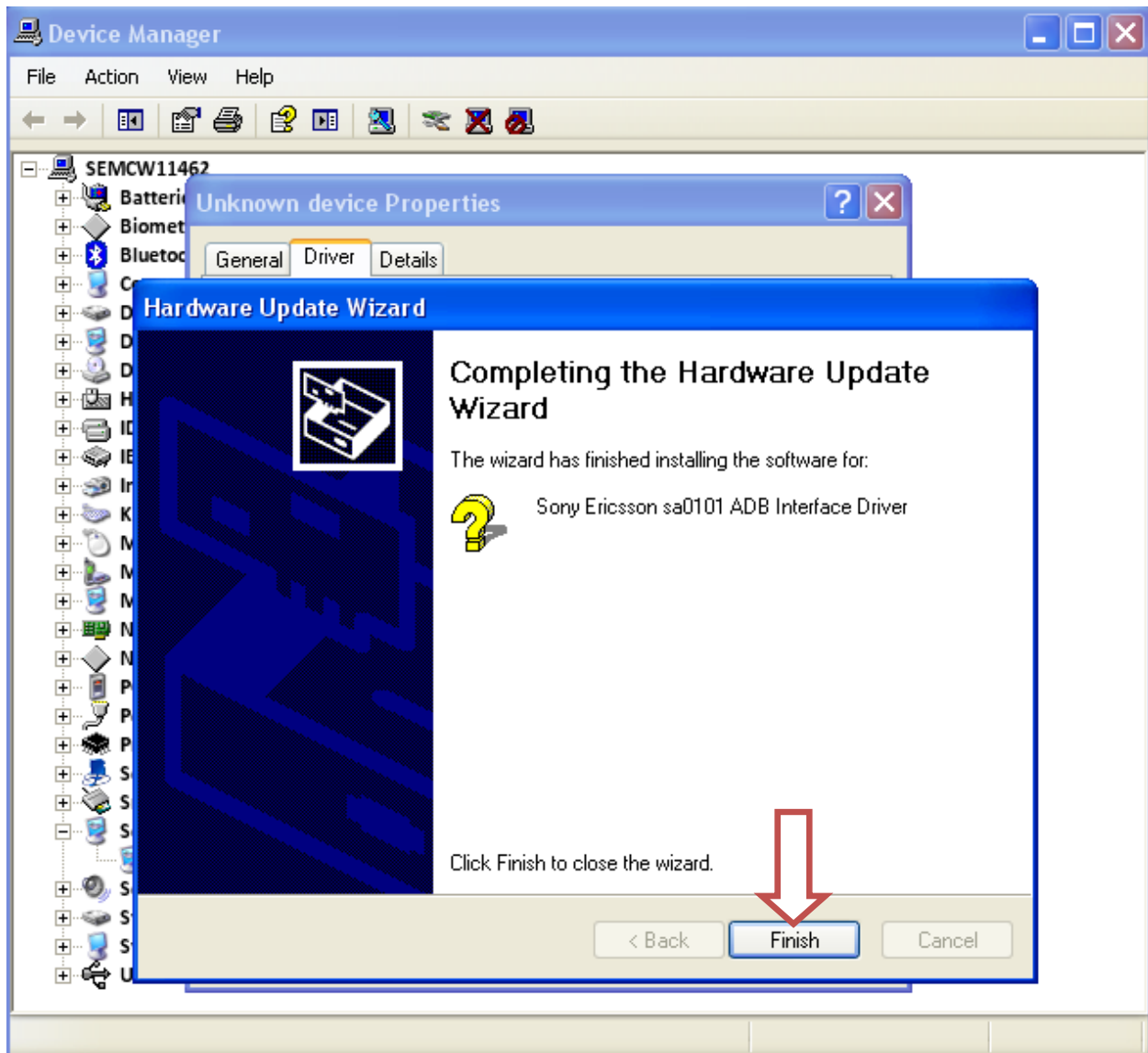
Click OK.



Click Next.



Click Finish.



Now it should say Sony so0108ADB Interface Driver.

